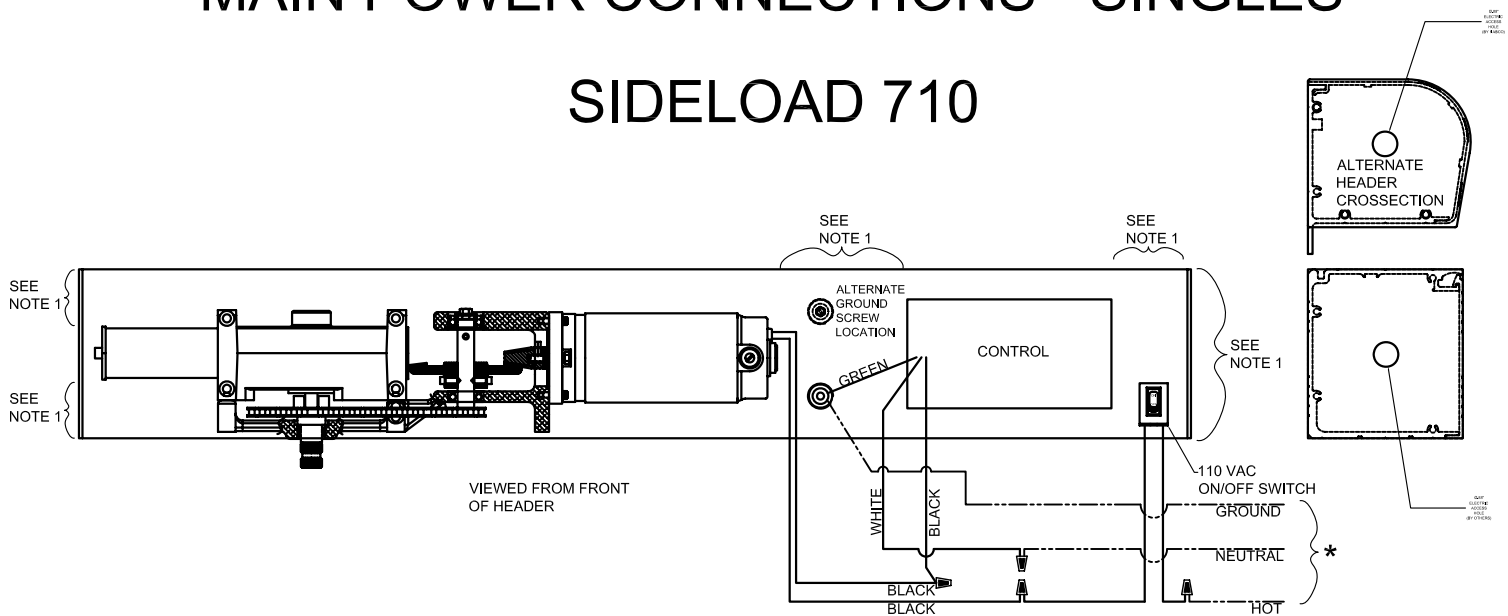


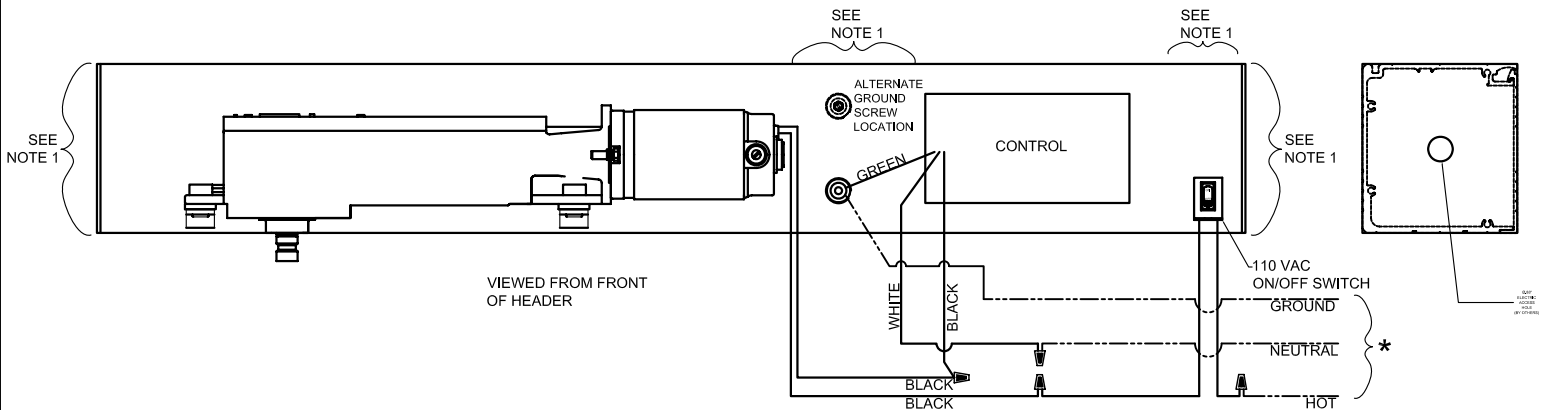
## MAIN POWER CONNECTIONS - SINGLES

### SIDELOAD 710



\* Electrical technician responsible for indicated connections.

### SIDELOAD 300/400/500



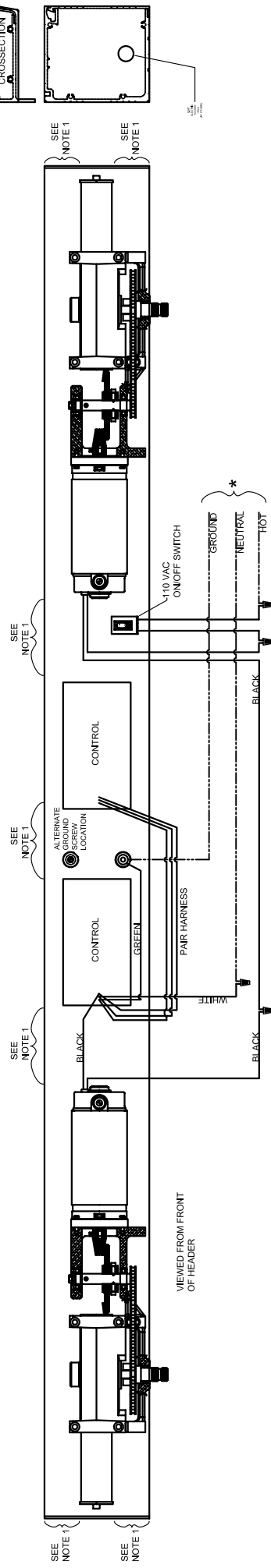
\* Electrical technician responsible for indicated connections.

#### NOTES:

1. Safe drill locations for electrical conduit. Protect components from metal chips when drilling.
2. Electrical connections must be made by qualified electrical technicians and must comply with all applicable governing agency codes.
3. Disconnect power at the fused disconnect during all electrical or mechanical service. Verify using a voltmeter.
4. Do not place finger or uninsulated tools inside the electrical control box. Touching wires or other parts inside the enclosure may cause electrical shock, serious injury or death.
5. The control ground wire and incoming ground wire must be connected to the same grounding screw provided in the header. Connect hot and neutral wires as shown above. Route these wires away from moving parts and other low voltage wiring.
6. If the door appears broken or does not seem to work correctly, it should be immediately removed from service and a qualified service technician contacted for corrective action.

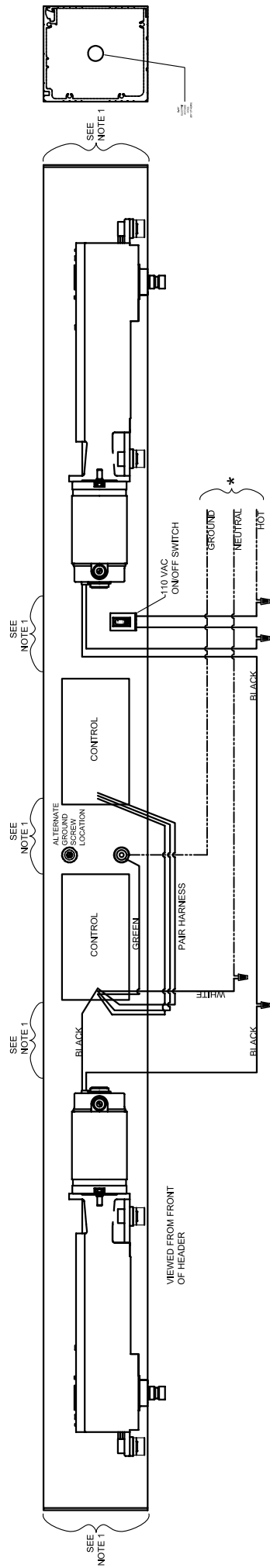
# MAIN POWER CONNECTIONS - PAIRS

## SIDELOAD 710



\* Electrical technician responsible for indicated connections.

## SIDELOAD 300/400/500



\* Electrical technician responsible for indicated connections.

**NOTES:**

1. Safe drill locations for electrical conduit. Protect components from metal chips when drilling.
2. Electrical connections must be made by qualified electrical technicians and must comply with all applicable governing agency codes.
3. Disconnect power at the fused disconnect during all electrical or mechanical service. Verify using a voltmeter.
4. Do not place finger or uninsulated tools inside the electrical control box. Touching wires or other parts inside the enclosure may cause electrical shock, serious injury or death.
5. The control ground wire and incoming ground wire must be connected to the same grounding screw provided in the header. Connect hot and neutral wires as shown above. Route these wires away from moving parts and other low voltage wiring.
6. If the door appears broken or does not seem to work correctly, it should be immediately removed from service and a qualified service technician contacted for corrective action.