

GT 710 Quick Set-up Guide

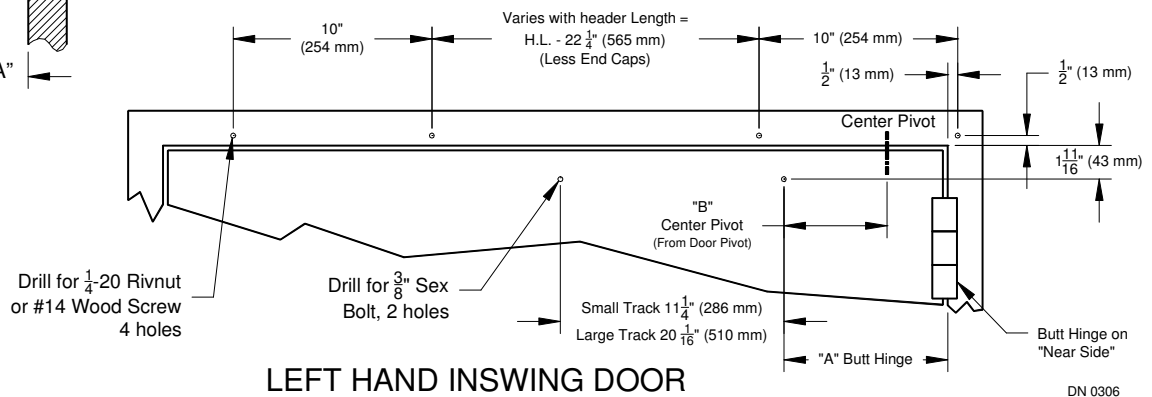
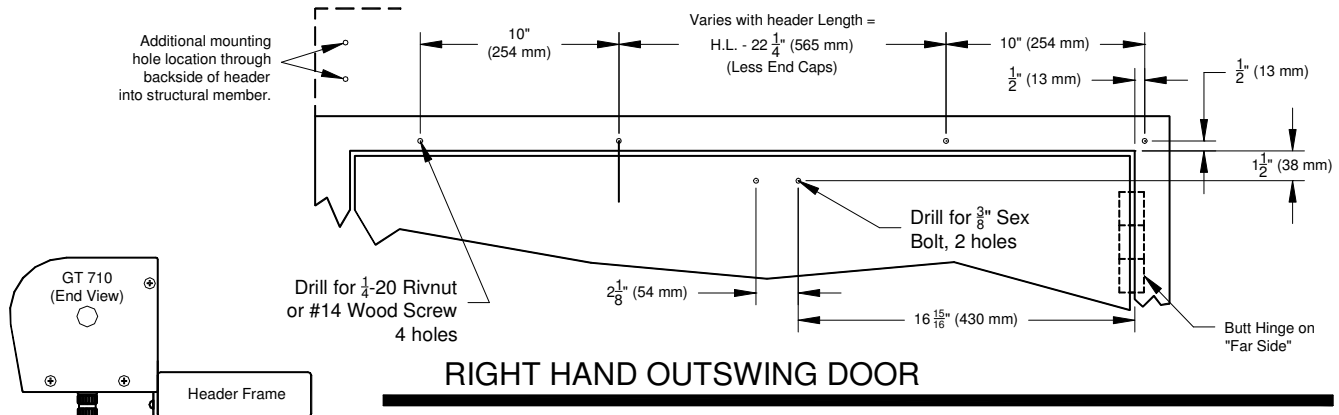
Nabco Entrances Inc. S82 W18717 Gemini Drive, Muskego, WI 53150
Ph: (877) 622-2694 Fax: (888) 679-3319 Web: www.NabcoEntrances.com

Complete Installation Manuals for this product are available on our website at the address shown above.

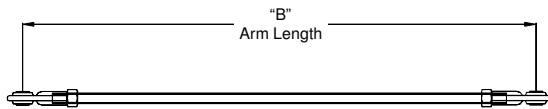
Quick Set-up

Hardware:

1. Mount header assembly to door frame (refer to diagram below)



2. Adjust outswing arm length "B" to suit reveal per the tables below.
Note: Inswing arms are pre-sized for reveal when unit is ordered.



| Arm Lengths - Outswing Center Pivot | |
|-------------------------------------|--------------------|
| Reveal "A" | Arm Length "B" |
| 0" | 14" (356 mm) |
| 1" (25 mm) | 14-7/8" (378 mm) |
| 2" (51 mm) | 15-3/4" (400 mm) |
| 3" (76 mm) | 16-11/16" (424 mm) |
| 4" (102 mm) | 17-9/16" (446 mm) |
| 5" (127 mm) | 18-1/2" (470 mm) |
| 6" (152 mm) | 19-3/8" (492 mm) |

| Arm Lengths - Outswing Butt Hinge | |
|-----------------------------------|--------------------|
| Reveal "A" | Arm Length "B" |
| 0" | 16-5/8" (422 mm) |
| 1" (25 mm) | 17-3/8" (441 mm) |
| 2" (51 mm) | 18-1/8" (460 mm) |
| 3" (76 mm) | 18-7/8" (479 mm) |
| 4" (102 mm) | 19-11/16" (500 mm) |
| 5" (127 mm) | 20-1/2" (521 mm) |
| 6" (152 mm) | 21-3/8" (543 mm) |

Distance to First Mounting Hole for Inswing Track Refer to Inswing Diagram Above

| Reveal | Dim "A" Butt Hinge | Dim "B" Center Pivot |
|--------|--------------------|----------------------|
| 0" | 7-5/8" (194 mm) | 7-3/16" (183 mm) |
| 1" | 8-5/16" (211 mm) | 7-15/16" (202 mm) |
| 2" | 8-1/16" (205 mm) | 8-3/4" (222 mm) |
| 3" | 13-1/8" (333 mm) | 9-9/16" (243 mm) |
| 4" | 14" (356 mm) | 13-11/16" (348 mm) |
| 5" | 14-1/2" (368 mm) | 13-3/4" (349 mm) |

Pre-Loading and Installing Arm

| Operator | # on Spindle |
|---------------------------|--------------|
| RH Inswing | 3 |
| LH Inswing | 4 |
| RH Outswing | 1 |
| LH Outswing | 2 |
| RH Inswing with 0" Reveal | 4 |
| LH Inswing with 0" Reveal | 3 |

Align the preload mark on the arm with the number shown to properly preload the unit.

3. Pre-load and install arm on closer spindle. Use table at right to determine correct pre-load.

GT 710 Quick Set-up Guide

 Nabco Entrances Inc. S82 W18717 Gemini Drive, Muskego, WI 53150
 Ph: (877) 622-2694 Fax: (888) 679-3319 Web: www.NabcoEntrances.com

Wiring:

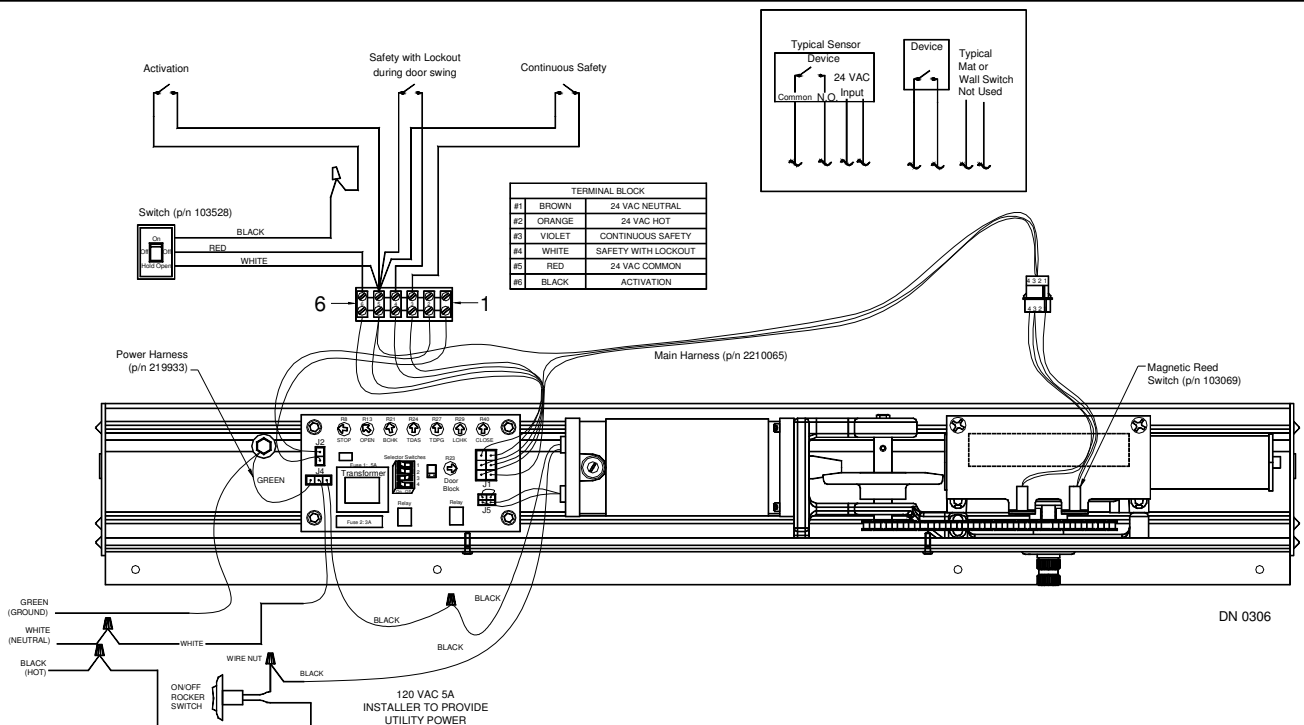
4. Connect activation devices to terminal block. Refer to wiring diagram and terminal block information below.
5. Install supplied door stop block.
6. With door in closed position, place one magnet (supplied) on chain sprocket under door closed switch. With door in fully open position, place one magnet (supplied) on chain sprocket under back check switch.
7. Connect power and adjust control by referring to tables below.
8. Before adjusting speeds, set current limit to maximum, adjust open-close-check speeds, then adjust current limit to proper level.

| Magnum IV Control LED Information | | | Potentiometers and Functions | |
|---|---------------|-----------------------------|------------------------------|--|
| LED Color | LED Status | Door Status | POT | FUNCTION |
| Green | Flashing Fast | Opening | STOP | Adjusts how door reacts to continuous safety input (terminal # 3) during Opening. Counterclockwise = door stops and closes, Clockwise = door stops and creeps open |
| | On Steady * | In Back Check * | | |
| | Flashing Slow | Closing | OPEN | Adjusts opening speed. Clockwise = faster |
| | Off | In Latch Check or Closed | BCHK | Adjusts Back Check speed. Clockwise = faster |
| Red | Flashing Fast | Safety w/Lockout Activated | TDAS | Adjusts how long door remains open after activation signal. Clockwise = longer |
| | Flashing Slow | Continuous Safety Activated | TDPG | Adjusts how long door remains open after Push-N-Go. Clockwise = longer |
| | On Solid | Recycle Activated | LCHK | Adjusts Latch Check speed. Clockwise = faster (not used on GT710) |
| * Green MUST be on steady at back check otherwise door will not hold open correctly. If Green LED is not on steady reposition magnet. | | | CLOSE | Adjusts closing speed. Clockwise = faster (not used on GT710) |
| | | | Current Limit | Adjusts how hard the door will push against an obstacle (while opening) before recycling. Clockwise = less sensitive |

| Dip Switch Information | | | Slide Switch | |
|------------------------|----------------------|------------------------|--------------|--|
| Dip Switch | On position | Off Position | Up | Low Energy - GT500, GT710 |
| 1 | Not Used | Not Used | Down | High Energy - GT300, GT400 (door opens faster) |
| 2 | Normally Open Safety | Normally Closed Safety | | |
| 3 | Push-N-Go Inactive | Push-N-Go Active | | |
| 4 | Timer Mode | Sequential Mode | | |

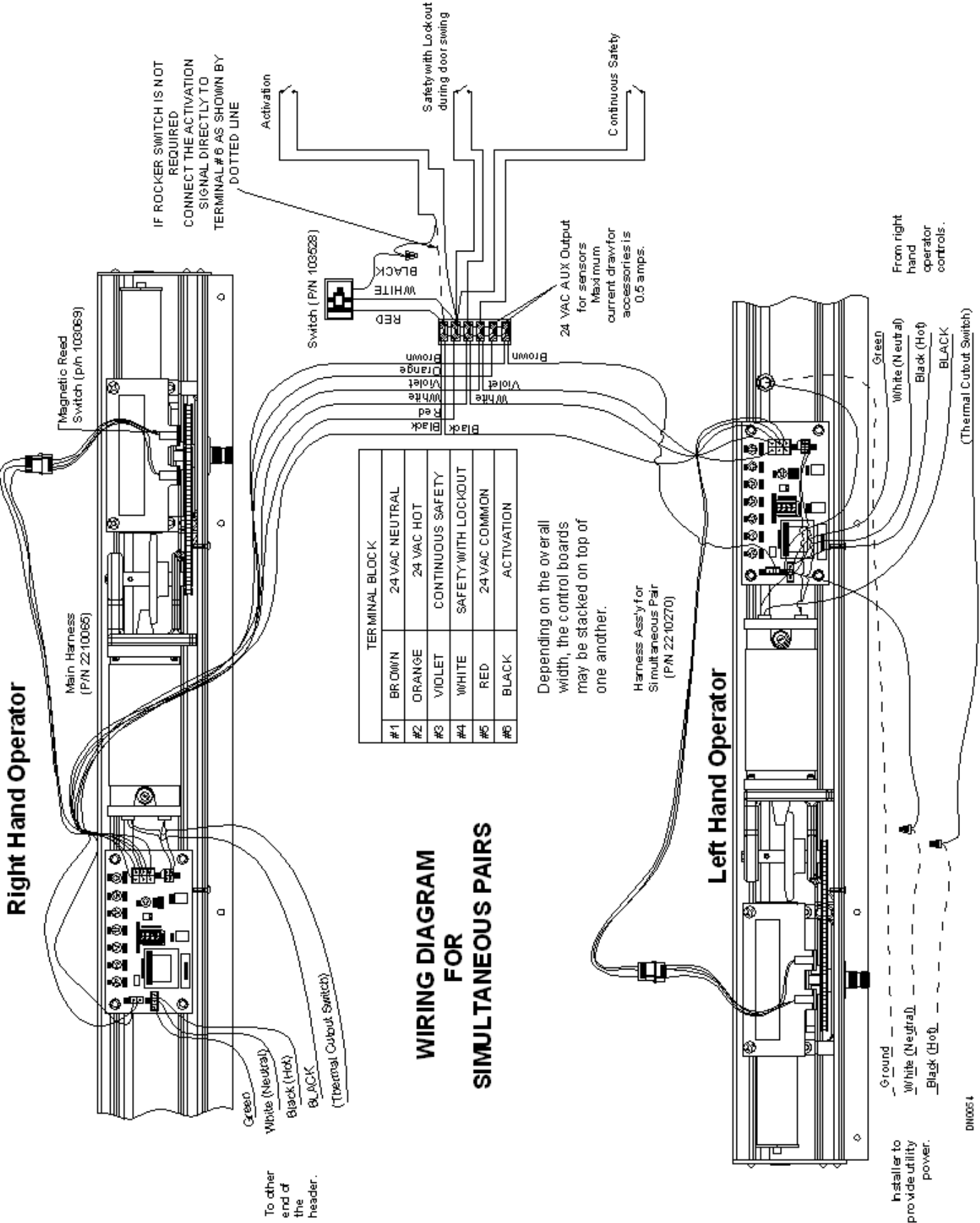
Note: Closing and latch check speeds are controlled by the hydraulic closer. Adjustment of these potentiometers on the Magnum IV control has no effect.

General Wiring Diagram



GT 710 Quick Set-up Guide

Nabco Entrances Inc. S82 W18717 Gemini Drive, Muskego, WI 53150
 Ph: (877) 622-2694 Fax: (888) 679-3319 Web: www.NabcoEntrances.com



DH0054

Troubleshooting Guide - GT710

| Symptom | Action/Cause | Solution |
|---|---|---|
| Operator does not function | <ol style="list-style-type: none"> 1 Check for 120 VAC 2 Check Fuse 3 Motor fuse blown (Protech motors only) 4 Check wiring of activating device (if used) | <ol style="list-style-type: none"> 1 Check incoming power. If power is good, check connection to motor. 2 Replace fuse if needed. 3 If equipped with a Protech motor, check fuse in motor harness, replace if necessary. 4 Be sure all connections are secure and in the correct locations. |
| Adjustment of hydraulic closer has little or no effect. | <ol style="list-style-type: none"> 1 Check 4 pin motor connector on the board (motor harness) 2 Check magnet locations 3 Preload on swing arm is not correct | <ol style="list-style-type: none"> 1 Pin #2 and #4 must be jumped by a wire. 2 Relocate magnet (one magnet under the latch switch when door is fully closed, other magnet under back-check when is fully door open). 3 Position arm as shown in hardware installation manual. |
| Door slams closed | <ol style="list-style-type: none"> 1 Main speed and/or latch speed on hydraulic closer not adjusted properly 2 Latch check magnet not in proper location 3 Preload on swing arm is not correct | <ol style="list-style-type: none"> 1 Turn main and/or latch speed in direction of turtle. 2 Relocate magnet. 3 Position arm as shown in hardware installation manual. |
| Door slams open | <ol style="list-style-type: none"> 1 Back check speed not adjusted properly 2 Back check magnet not in proper location 3 Preload on swing arm is not correct | <ol style="list-style-type: none"> 1 Adjust back check speed on hydraulic closer or on Magnum control. 2 Relocate magnet. 3 Position arm as shown in hardware installation manual. |
| Door tries to close when activated | Motor polarity is wrong | Reverse wires on motor. |
| Door does not stay tightly closed | <ol style="list-style-type: none"> 1 Preload on swing arm is not correct 2 Spring adjustment not correct on LCN closer. 3 Building stack pressure is excessive | <ol style="list-style-type: none"> 1 Position arm as shown in hardware installation manual. 2 Adjust spring tension on LCN closer as per GT-710 hardware installation manual. 3 Upgrade operator unit to GT 500. |
| Door is staying open on activation | <ol style="list-style-type: none"> 1 Time delay set too high on controller 2 Controller is in sequential mode | <ol style="list-style-type: none"> 1 Adjust "TDAS" potentiometer on Magnum board or Extended Time Delay on U-series microprocessor 2 Set dip switch 4 on Magnum board to On for timer mode |